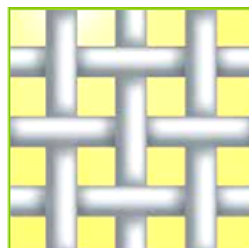
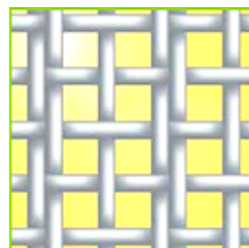


## TELAS PARA MOLINOS Y ALIMENTOS

PRODUCTO	ABERTURA	ÁREA ABIERTA	NÚMERO DE HILOS		DIÁMETRO DEL HILO
			/cm	/inch	
SaatiMil PA XXX	micron	%	/cm	/inch	micron
PA 3 XXX	300	46	23	58	140
PA 4 XXX	280	43	24	61	140
PA 5 XXX	255	46	27	69	120
PA 6 XXX	212	40	30	76	120
PA 7 XXX	200	39	31	79	120
PA 8 XXX	180	43	36	91	100
PA 8,5 XXX	160	37	38	97	100
PA 9 XXX	155	39	41	104	90
PA 9,5 XXX	140	36	43	109	90
PA 10 XXX	135	39	46	117	80
PA 10,5 XXX	125	38	49	124	80
PA 11 XXX	115	35	51	130	80
PA 12 XXX	115	37	55	140	70
PA 12,5 XXX	105	32	55	140	80
PA 13 XXX	100	32	57	145	70
PA 14 XXX	90	30	62	157	70
PA 14,5 XXX	90	35	66	168	61
PA 17 XXX	80	32	71	180	61



SAATImil XXX



SAATImil XX

PRODUCTO	ABERTURA	ÁREA ABIERTA	NÚMERO DE HILOS		DIÁMETRO DEL HILO
			/cm	/inch	
SaatiMil PA XX	micron	%	/cm	/inch	micron
PA 6 XX	212	47	30/36	76/91	(90+2x61)/80
PA 7 XX	200	48	33/36	84/91	(80+2x61)/80
PA 8 XX	180	46	36/40	91/102	(80+2x61)/70
PA 8,5 XX	160	44	39/43	99/110	(70+2x61)/70
PA 9 XX	150	44	41/48	104/121	(70+2x61)/61
PA 9,5 XX	140	43	43/50	110/127	(61+2x60)/60
PA 10 XX	132	44	47/52	120/132	(61+2x50)/61
PA 10,5 XX	125	40	49/54	124/137	(61+2x50)/61
PA 11 XX	118	42	50/59	128/151	(61+2x50)/50
PA 12 XX	112	40	52/62	132/157	(61+2x50)/50
PA 12,5 XX	106	40	56/64	142/163	(61+2x44)/50
PA 13 XX	100	38	57/67	145/169	(61+2x50)/50
PA 14 XX	95	38	61/69	156/175	(50+2x44)/50
PA 15 XX	85	34	65/74	165/188	(50+2x43)/50